

ImageMaster S-18



The Latest Generation of High-Speed Plastic Card Printing High-volume desktop printer with IP connectivity

The fastest high-quality printer on the market today, the ImageMaster S-18 monochrome thermal printer allows you to personalize cards for customers, clients and employees, with outstanding speed and reliability.

Depending on card layout, the single-sided S-18 prints up to 1800 cards per hour. Designed to produce large quantities of cards reliably, consistently and without problems, ImageMaster S-18 printers are ideal for membership, loyalty and telephone card applications in bureau, gaming and leisure environments.

ImageMaster S-18 printers offer many unique capabilities and options. They deliver cost-saving features such as the ability to automatically use the minimum amount of ribbon needed to personalize a card. Compatible with a variety of card thicknesses and types, these printers boast the optional ability to handle clear cards, encode magnetic stripe cards and personalize smart cards. The printers feature a sophisticated cleaning system

to maintain a high printing standard, and add-ons include a carousel for multiple card types. A full range of different color ribbons is supplied by NBS, and cost-saving narrow ribbons are also available.

ImageMaster S-18 printers support IP/Ethernet connectivity. By eliminating the need for print servers and interface boxes, the printers provide an extremely low cost of ownership. The S-18 comes standard with Windows XP driver for easy interface with many commercially available applications. NBS SmartSys Tabletop software is powerful available option. This user-friendly Windows® application offers powerful card design tools and compatibility with a wide variety of data sources which is ideal for batch issuance. The S-18 is also supplied with a keyboard for use, if required, in stand-alone mode.

**... speed & quality
for a price
that fits ...**

FEATURES

- Delivers fast monochrome printing - up to 1800 single-sided
- Automatic card cleaning to help maintain quality
- Operates as a stand-alone unit with keyboard
- Supports IP & Ethernet connectivity
- 200-card auto-feed input hopper & auto-unload stacker



ImageMaster™ S-18

Technical Details

GENERAL SPECIFICATIONS

- Fast, monochrome printing- up to 1800 single-sided cards depending on card layout
- 300 dots per inch (11.8 dots per mm) resolution
- Supports both internally generated layouts using ASCII text fields from host computer, or full Microsoft Windows® compatibility with Windows 7, Windows XP and Windows 2000 drivers
- Keyboard for manual data entry
- Supplied with Windows XP driver
- Two-line, 40-character LCD
- Password protection in operator and supervisor modes
- Auto-feed input hopper (200-card capacity)
- Auto-unload stacker (200-card capacity)
- Two production counters, one re-settable
- Automatic card cleaning mechanism with user configurable cleaning interval
- Reject tray (25 card capacity)
- Host computer communication interfaces: RS-232C Serial 9 Pin; Ethernet 10/100bT
- TCP/IP printing using LPR/LPD or Raw socket. Supports online printing from a variety of host computers including PC running Microsoft Windows 7, XP, AS-400, and Linux/Unix systems
- Generates the following bar codes in layout mode:
 - > EAN 13 & 8, UPC-A, Code 39, Codabar, Code 128, Code 2 of 5
- Shipped with the following default fonts for layout mode:
 - > Swiss Regular: 6, 8, 10, 14, 18, 24 pt
 - > Swiss Italics: 6, 8, 10, 14 pt
 - > OCRA: 10, 12 pt
 - > Dutch Bold: 6, 8, 10, 18, 24 pt
 - > Any True-Type font can be downloaded from Microsoft Windows to support customized fonts
- PC Dash Board software for use in downloading additional fonts and images also used for flash loading of firmware for easy updates. It also can be used to back the machine settings.
- Ability to run the machine via telnet to allow for remote trouble-shooting and machine configuration
- Full range of monochrome color ribbons (full and half widths) available
- RoHS Compliant

OPTIONAL FEATURES

- Magnetic encoding: 3 track, Dual Coercivity, ISO 7811, Bit to Bit (binary), Bally's
- Smart Card ISO 7816 personalization
- Mifare Contactless Card Support
- Carousel: 6 input hoppers, each containing 100 cards 0.030" (0.76 mm) cards only
- Clear card kit
- Thin card kit for for 0.015" (0.38mm) and 0.020" (0.51 mm) cards

CARD SPECIFICATIONS

- Types: PVC & composite PVC - including breakaway and key cards
- Maximum print area: 0.100" +/- 0.010" from side edges of card; 0.100" +/- 0.015" from top and bottom edges of card
- Card width/length: ISO 7810 (CR-80) 2.125" (54 mm) x 3.375" (86 mm)
- Card thickness: 0.024" (0.61 mm) to 0.030" (0.76mm)

PHYSICAL DIMENSIONS

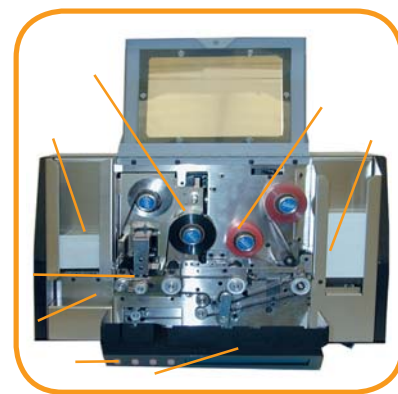
- Depth: 14.0" (356 mm)
- Width: 19.0" (482 mm)
- Height: 12" (305 mm)
- Weight: 52 lbs (23.6 kg)

ELECTRICAL

- Power requirements: 110-230 Volts, 50-60 Hz
- FCC Class B, CE and ETL approved

ENVIRONMENTAL

- Operating temperature: 15°C to 30°C
- Relative humidity: 20% to 65% non-condensing
- Storage temperature: -5°C to 70°C
- Storage humidity: 20% to 70% non-condensing
- Ventilation: Free air



- 1 - LCD Display
- 2 - Switch Panel
- 3 - Reject Tray
- 4 - Printhead
- 5 - Output Hopper
- 6 - Printing Foil
- 7 - Cleaning Tape
- 8 - Input Hopper



Optional 6-hopper carousel



Website: www.nbstech.com
Email: info@nbstech.com

Corporate Headquarters
Canada
703 Evans Avenue
Toronto, Ontario
M9C 5E9
Canada
tel: +1 416.621.1911
fax: +1 416.621.8875



AL FARKAD TRADING EST
Office 10, 2nd Floor, Tower 13,
Al Awkaf Complex, Mubarak Al Kabeer St.,
Kuwait.
Tel: 22405100, 22405150
Fax: 22450866
E-Mail: sales@alfarkad.com
Web Site: www.alfarkad.com